

Indeks Harga Saham Gabungan (IHSG)

Signal Neutral

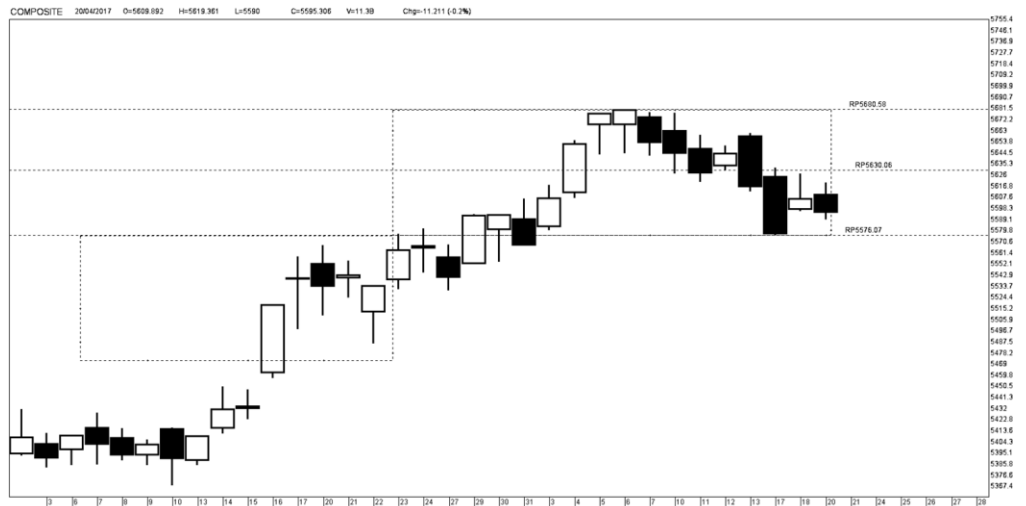
Last 5.595

Target 5.620 - 5.576

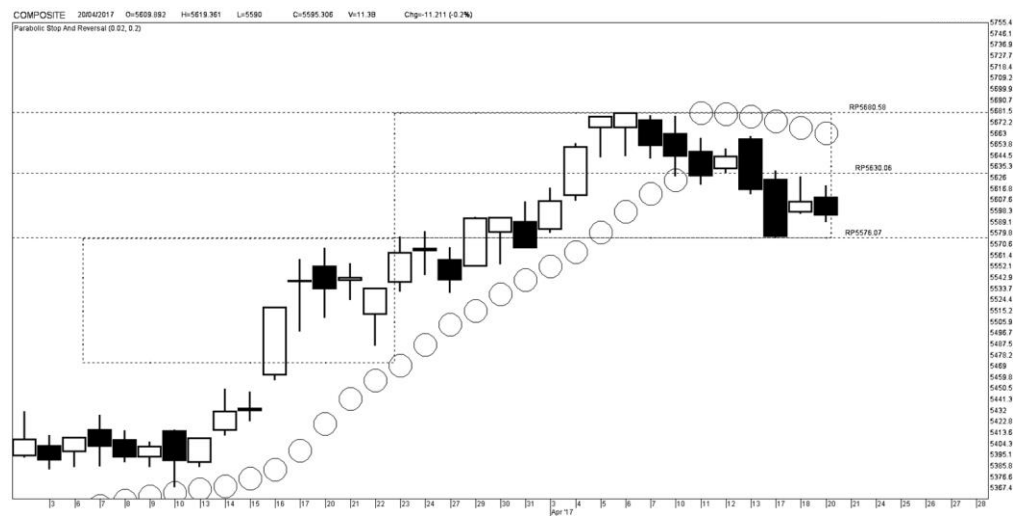
52wk Range 4,408 - 5,680

Highlight

Kinerja IHSG cenderung untuk menguji level *support* pada kisaran 5.676 dengan level *resistance* yang berada pada kisaran 5.620



Kinerja IHSG



Kinerja IHSG

Resistance 3	5,730	Support 1	5,622
Resistance 2	5,684	Support 2	5,592
Resistance 1	5,668	Support 3	5,546
Pivot Point	5,638		

Support & Resistance IHSG

Disclaimer

The information contained in this report has been taken from sources which we deem reliable. However, none of P.T. Danareksa Sekuritas and/or its affiliated companies and/or their respective employees and/or agents makes any representation or warranty (express or implied) or accepts any responsibility or liability as to, or in relation to, the accuracy or completeness of the information and opinions contained in this report or as to any information contained in this report or any other such information or opinions remaining unchanged after the issue thereof.

We expressly disclaim any responsibility or liability (express or implied) of P.T. Danareksa Sekuritas, its affiliated companies and their respective employees and agents whatsoever and howsoever arising (including, without limitation for any claims, proceedings, action, suits, losses, expenses, damages or costs) which may be brought against or suffered by any person as a result of acting in reliance upon the whole or any part of the contents of this report and neither P.T. Danareksa Sekuritas, its affiliated companies or their respective employees or agents accepts liability for any errors, omissions or mis-statements, negligent or otherwise, in the report and any liability in respect of the report or any inaccuracy therein or omission therefrom which might otherwise arise is hereby expressly disclaimed. The information contained in this report is not to be taken as any recommendation made by P.T. Danareksa Sekuritas or any other person to enter into any agreement with regard to any investment mentioned in this document. This report is prepared for general circulation. It does not have regards to the specific person who may receive this report. In considering any investments you should make your own independent assessment and seek your own professional financial and legal advice.

Lucky Bayu Purnomo
 Research Analyst
 (62-21) 2955 577 ext.3512
 lucky.purnomo@danareksa.com

Danareksa research report are also available at Reuters Mulfex and First Call Direct and Bloomberg